



Minnesota Regional Development Commissions

Region Five

- 162,000 population
- 5 Counties, all considered economically distressed
- 65 Cities, mostly all under 500 people
- 155 Townships
- 2 Tribes
- 9,000 miles of road
- 1 Local airport, 2 Community Colleges
- 2 hr. drive to Minneapolis.
- Largest city Baxter: one of top 20 fastest growing Micropolitan's in the nation

Commission focus

- Transportation**
 - Safe Routes for Schools planning
 - Deliverance of transportation bill funding
 - Transit, trail, rail studies with MinDOT
 - Functional Classification
- Economic Development**
 - Lending; Revolving Loan Fund, septic systems and well water loans, (microlending, PACE in development)
 - Workforce development initiatives
 - Internship programs
 - Eco. Dev. Planning – CEDS
 - JobZ administrator
- Community Development**
 - Active Living & recreation planning
 - History, Arts and Education coordination
 - Hazard Mitigation Planning
 - Micropolitan & Land use initiatives
 - Broadband initiatives
- Energy**
 - County energy assessments
 - Neighborhood Energy Workshops
 - GreenSteps Cities
 - Project development
- HUD - R5DC Sustainable Communities Regional Planning**
- And, Local Foods.....**

R5DC Sustainable Communities Regional Planning grant writing team!

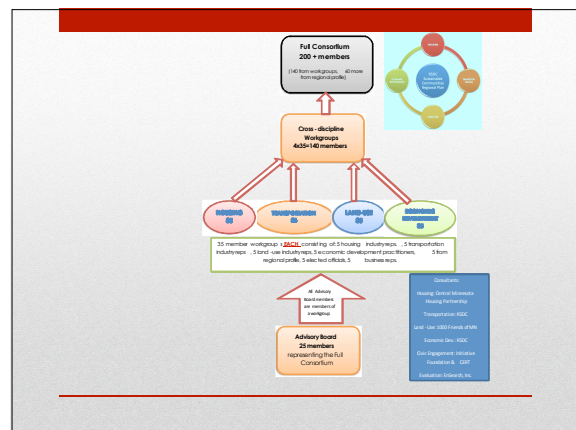
Kathy Draeger, Ph.D.
 University of MN
draeg001@umn.edu

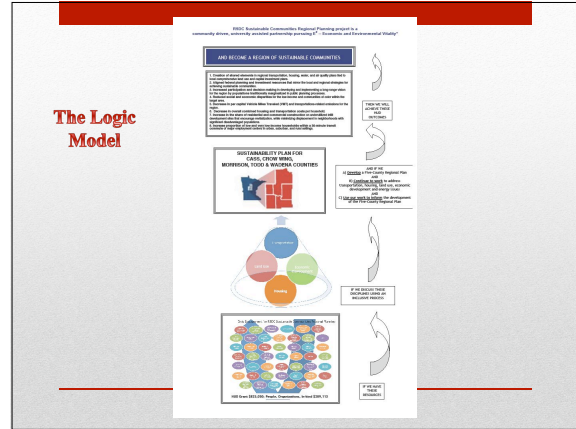
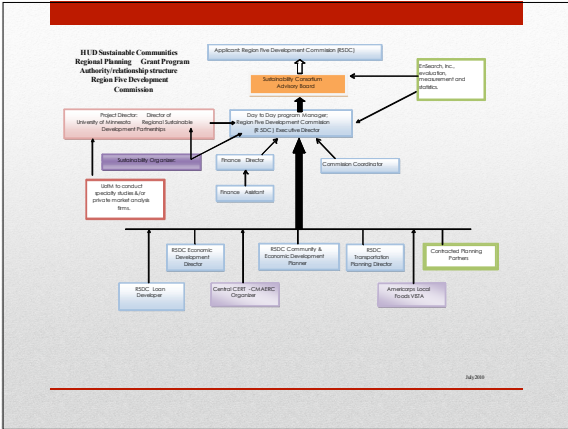
Stacey Hueftle Stockdill, Ph.D.
 EnSearch, Inc.
ensearch1@aol.com

Virajita Singh, Senior Research Fellow, LEED AP
 University of Minnesota
singh023@umn.edu

We did what all good Minnesotans do to celebrate.....

We ate cake!





To understand the process, view the HUD R5DC Sustainable Communities Regional Planning Brochure/flyer

Budget Summary

R5DC Sustainable Communities Planning Grant			
HUD Award	\$ 825,050.00		
EXPENSES			
Housing	\$ 65,598.00	Bill Reinko/CMHP	
Economic Development	\$ 72,850.00	Lee Miller/R5DC	
Land Use	\$ 65,598.00	Phil Hunsicker/1000Friends of MN	
Transportation	\$ 53,244.00	Jake Huebsch/R5DC	
Community Development	\$ 26,050.00	Tad Erickson/R5DC	
Civic Engagement	\$ 65,598.00	Don Hickman/Initiative Foundation	
Civic Engagement	\$ 9,232.00	Angela Headlee/CERT	
Evaluation	\$ 65,598.00	Stacey Stockill/EngSearch	
Specialty Studies & Sustainability Coord	\$ 262,955.00	Kathy Drager/UM	
Meeting Expenses	\$ 9,400.00	Food/meeting space	
Outreach	\$ 8,513.00		
Admin	\$ 54,599.00	Nicky Larson/R5DC	
	\$ 794,275.00	To Consultants	\$ 271,634.00
		To U of MN	\$ 261,995.00
		To R5DC	\$ 206,743.00
Airfare to DC	\$ 6,000.00	Other Expenses:	\$ 84,668.00
Per Diem for 20 low income community	\$ 29,000.00	Total	\$ 825,050.00
Community Members Honorariums	\$ 22,500.00		
Transportation for 150 people over 2 years	\$ 4,275.00		
	\$ 66,775.00		
TOTAL FROM HUD	\$ 825,050.00		


Budget per diems, mileage and honorariums detail

BREAKDOWN OF PERSONAL HONORARIUMS, MILEAGE FOR SUSTAINABLE COMMUNITIES PLANNING GRANT			
Per Diem	\$ 10,000.00	100 days x \$100	100 used days
Honorariums	\$ 1,000.00	100 days x \$10	100 used days
Mileage	\$ 1,000.00	100 days x \$10	100 used days
TOTAL	\$ 12,000.00		
EXPENSES	\$ 12,000.00		
PER DIEM	\$ 10,000.00		
HONORARIUMS	\$ 1,000.00		
MILEAGE	\$ 1,000.00		
TOTAL	\$ 12,000.00		

- How does the R5DC Sustainable Communities Plan stand to assist our region in Central Minnesota?**
1. Shared vision and alignment of multi-jurisdictional, multi-discipline/agency priorities.
 2. Inclusion of the regions demographic profile.
 3. Improve our economic and environmental vitality – the balanced approach.
 4. Drive increased efficiency and delivery of services through regional scale. Builds on existing regional efforts in a new way.
- Region Five DEVELOPMENT COMMISSION**


How does the R5DC Sustainable Communities Planning effort tie to Economic Development?

1. Less silo work. Each discipline becomes the **responsibility** of several agencies/funding mechanism. New partners!
2. Access to funding that did not previously prioritize economic development.
3. Innovation spurs from several wells that all lead to the same pool.



How does the R5DC Sustainable Communities Planning effort tie to the CEDS?

1. The Sustainable Communities Plan IS OUR CEDS.
 - a. Avoids duplication of efforts
 - b. Inclusionary of people not typically part of the CEDS process.
 - c. Adds a policy piece.
 - d. Elevates the regional value of our CEDS.
2. Creates the opportunity for the CEDS to be recognized by several State and Federal agencies as a valid process worthy of implementation funding. What if?.....



What else?.....Why do this?

1. This is how we must adapt to the "new norm".....new way of doing business.
2. New opportunities, new relationships.
 - new BMP's (use of political, social, fiscal capital)
 - shared data
 - Funding of regionally significant projects
3. Regionalism can "step up" to a new level of importance. Driven by community need and will.....not by mandates.





QUESTIONS



*5 Counties,
 One Vision,
 One Source!*

*Cheryl Lee Hills
 Executive Director
 403 Prairie Ave. NE Suite 100
 Staples, MN 56479
 O: 218.894.3233
 C: 218.270.0188*

Serving: Crow Wing,
 Cass, Morrison, Todd
 and Wadena Counties.